



Series 1325-1326-1345-1347 - Twin rod cylinders

Construction characteristics

| | |
|---------------------------|---|
| Other seals | NBR 80 shore rubber |
| Cushion bushings | hardened aluminium |
| Barrel | RA=0.3-0.5 anodised aluminium |
| Flange | zinc plated steel |
| Rod seal | PUR |
| Pistons | vulcanized rubber block on steel core with incorporated permanent magnet, or without magnet for non magnetic version (plus spacer). |
| Piston rod | C43 chromed steel or stainless steel |
| Front cap | oxidised aluminium |
| Rear cap | UNI 5079 aluminium alloy casting |
| Cushion adjustment screws | nickel plated steel |

Operational characteristics

| | |
|---------------------|-----------------------------|
| Fluid | filtered and lubricated air |
| Pressure | 10 bar |
| Working temperature | -5 °C ... +70 °C |

Please follow the suggestions below to ensure a long life for these cylinders:

- use clean and lubricated air.
- correct alignment during assembly with regard to the applied load so as to avoid radial components or bending the rod.
- avoid high speeds together with long strokes and heavy loads: this would produce kinetic energy which the cylinder cannot absorb, especially if used as a limit stop (in this case use mechanical stop device).
- evaluate the environmental characteristics of cylinder used (high temperature, hard atmosphere, dust, humidity etc.).

Please note: air must be dried for applications with lower temperature.

Use hydraulic oils H class (ISO VG32) for correct continued lubrication.

Cushioning lengths

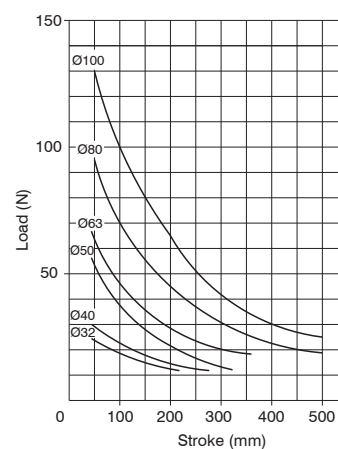
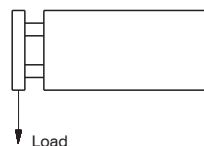
| Bore | Ø | 32 | 40 | 50 | 63 | 80 | 100 |
|--------------|----|----|----|----|----|----|-----|
| Front length | mm | 22 | 22 | 24 | 32 | 32 | 32 |
| Rear length | mm | 28 | 32 | 32 | 40 | 44 | 50 |

Standard strokes

Ø32: 25 - 50 - 75 - 100 - 150 - 200 mm
Ø40: 25 - 50 - 75 - 100 - 150 - 200 - 250 mm
Ø50: 25 - 50 - 75 - 100 - 150 - 200 - 250 - 300 mm
Ø63: 25 - 50 - 75 - 100 - 150 - 200 - 250 - 300 - 350 mm
Ø80: 25 - 50 - 75 - 100 - 150 - 200 - 250 - 300 - 350 - 400 - 500 mm
Ø100: 25 - 50 - 75 - 100 - 150 - 200 - 250 - 300 - 350 - 400 - 500 mm
 On request are available strokes up to: 1000 mm

Stroke tolerance (ISO 15552)

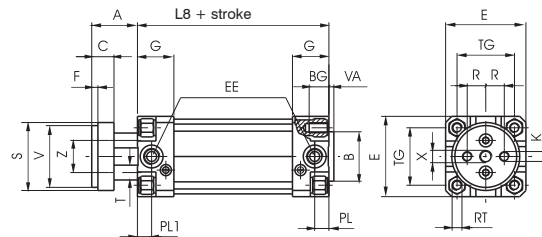
| Bore | Stroke | Tolerance |
|-----------|--------------|-----------|
| 32-40-50 | up to 500 mm | +2 |
| 63-80-100 | | 0 |



Basic version

Coding: 13V.Ø.stroke.S

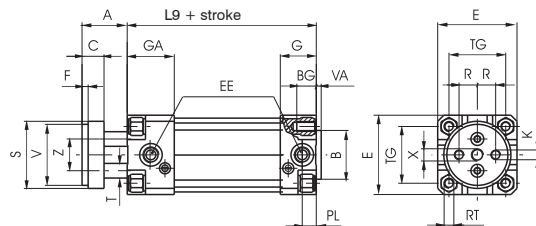
| | |
|---|------------------------|
| V | VERSION |
| | 25 = magnetic |
| | 26 = non-magnetic |
| Ø | BORE |
| | 32 = Ø32 |
| | 40 = Ø40 |
| | 50 = Ø50 |
| | 63 = Ø63 |
| | 80 = Ø80 |
| S | PISTON ROD |
| | 01 = C43 chromed steel |
| | 01X = Stainless steel |



Extended front cap

Coding: 13V.Ø.stroke.S

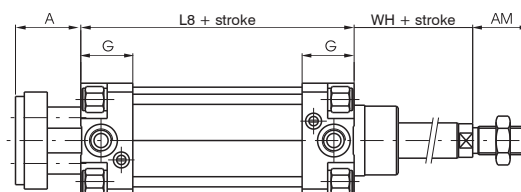
| | |
|---|------------------------|
| V | VERSION |
| | 45 = magnetic |
| | 47 = non-magnetic |
| Ø | BORE |
| | 32 = Ø32 |
| | 40 = Ø40 |
| | 50 = Ø50 |
| | 63 = Ø63 |
| | 80 = Ø80 |
| S | PISTON ROD |
| | 01 = C43 chromed steel |
| | 01X = Stainless steel |



Through rod cylinder version with ISO standard

Coding: 13V.Ø.stroke.S

| | |
|---|------------------------|
| V | VERSION |
| | 25 = magnetic |
| | 26 = non-magnetic |
| Ø | BORE |
| | 32 = Ø32 |
| | 40 = Ø40 |
| | 50 = Ø50 |
| | 63 = Ø63 |
| | 80 = Ø80 |
| S | PISTON ROD |
| | 02 = C43 chromed steel |
| | 02X = Stainless steel |





Profile tube cylinders, non rotating

Series 1325-1326-1345-1347 - Twin rod cylinders

Through rod twin cylinder version

Coding: 13V.Ø.stroke.S

| | |
|---|------------------------|
| V | VERSION |
| | 25 = magnetic |
| | 26 = non-magnetic |
| Ø | BORE |
| | 32 = Ø32 |
| | 40 = Ø40 |
| | 50 = Ø50 |
| | 63 = Ø63 |
| | 80 = Ø80 |
| | 100 = Ø100 |
| S | PISTON ROD |
| | 06 = C43 chromed steel |
| | 06X = Stainless steel |

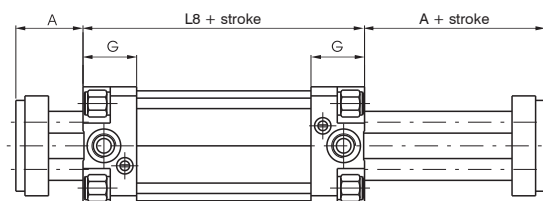


Table of dimensions

| Bore | | | 32 | 40 | 50 | 63 | 80 | 100 |
|------------|----------|--------------------|-------|--------|--------|--------|--------|--------|
| A | | | 26 | 30 | 37 | 37 | 46 | 51 |
| AM | | | 22 | 24 | 32 | 32 | 40 | 40 |
| B | | | 30 | 35 | 40 | 45 | 45 | 55 |
| BG | | | 12 | 12 | 16 | 16 | 20 | 20 |
| C | | | 15 | 15 | 18 | 22 | 22 | 22 |
| E | | | 46 | 52 | 65 | 75 | 95 | 115 |
| EE | | | G1/8" | G 1/4" | G 1/4" | G 3/8" | G 3/8" | G 1/2" |
| F | | | 4 | 4 | 5 | 5 | 5 | 5 |
| G | | | 25 | 29 | 29,5 | 36 | 36 | 40 |
| GA | | | 50 | 54 | 54,5 | 61 | 61 | 65 |
| K | | | M6 | M8 | M8 | M10 | M12 | M12 |
| L8 | | | 94 | 105 | 106 | 121 | 128 | 138 |
| L9 | | | 119 | 130 | 131 | 146 | 153 | 163 |
| PL | | | 9 | 11,5 | 13 | 14 | 16 | 18 |
| PL1 | | | 9.5 | 11 | 10,5 | 14 | 13 | 15 |
| R | | | 9.5 | 11,25 | 15 | 19 | 25 | 35 |
| RT | | | M6 | M6 | M8 | M8 | M10 | M10 |
| S | | | 35 | 45 | 55 | 70 | 85 | 105 |
| T | | | 8 | 10 | 12 | 16 | 20 | 20 |
| TG | | | 32.5 | 38 | 46,5 | 56,5 | 72 | 89 |
| V | | | 32 | 40 | 50 | 63 | 80 | 100 |
| VA | | | 4 | 4 | 4 | 4 | 4 | 4 |
| Z | | | 18 | 22 | 26 | 35 | 40 | 50 |
| WH | | | 26 | 30 | 37 | 37 | 46 | 51 |
| X | | | M8 | M10 | M10 | M12 | M14 | M14 |
| Weight (g) | Stroke 0 | Basic version | 560 | 810 | 1380 | 2300 | 3680 | 5740 |
| | | Extended front cap | 650 | 950 | 1500 | 2500 | 4100 | 6300 |
| | | every 10 mm | 20 | 26 | 30 | 40 | 80 | 90 |

3

PNEUMATIC ACTUATION

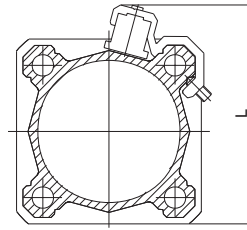
Sensor brackets codes - 1500._, RS._, HS._

Coding: 1320.T

| | |
|---|--------------|
| T | TYPE |
| | A = Ø32-Ø40 |
| | B = Ø50-Ø63 |
| | C = Ø80-Ø100 |

Sensor for microbore cylinders

For technical characteristics and ordering codes see the "Magnetic sensors" sections



| Bore | Ø32 | Ø40 | Ø50 | Ø63 | Ø80 | Ø100 |
|------|-----|-----|-----|-----|-----|------|
| L | 60 | 65 | 77 | 87 | 105 | 125 |

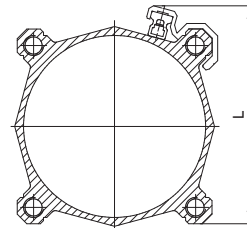
Sensor brackets codes - 1595.HAP

Coding: 1320.T

| | |
|---|----------------|
| T | TYPE |
| | ASC = Ø32-Ø40 |
| | BSC = Ø50-Ø63 |
| | CSC = Ø80-Ø100 |

Sensor for microbore cylinders

For technical characteristics and ordering codes see the "Magnetic sensors" sections



| Bore | Ø32 | Ø40 | Ø50 | Ø63 | Ø80 | Ø100 |
|------|-----|-----|-----|-----|-----|------|
| L | 60 | 65 | 77 | 87 | 105 | 125 |

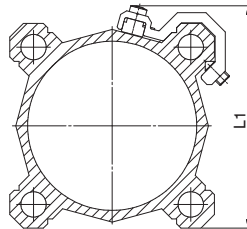
Sensor brackets codes - 1580._, MRS._, MHS

Coding: 1320.T

| | |
|---|---------------|
| T | TYPE |
| | AS = Ø32-Ø40 |
| | BS = Ø50-Ø63 |
| | CS = Ø80-Ø100 |

Sensor for microbore cylinders

For technical characteristics and ordering codes see the "Magnetic sensors" sections

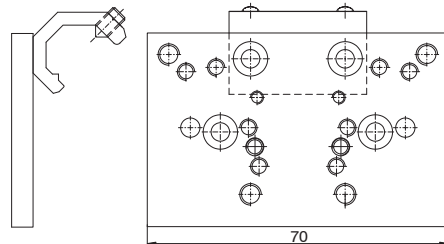


| Bore | Ø32 | Ø40 | Ø50 | Ø63 | Ø80 | Ø100 |
|------|-----|-----|-----|-----|-----|------|
| L1 | 48 | 54 | 66 | 76 | 96 | 112 |

Support for solenoid valves

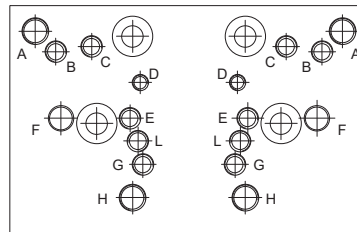
Coding: 1320.T

| | |
|---|---------------|
| T | SIZE |
| | 15 = Ø32-Ø40 |
| | 16 = Ø50-Ø63 |
| | 17 = Ø80-Ø100 |



Fixing holes for valves series:

A = 414/2
B = 824
C = 828, T488, 488, 484
D = 2400
E = 2600
F = Bases for ISO solenoid valves
G = 858/2
H = T424
L = 888

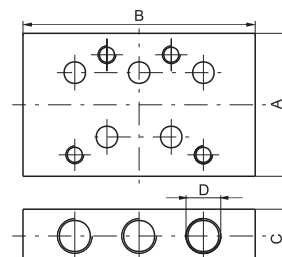


This accessory permits to mount a valve or an electrovalve on a side of the cylinder. The plate can be fitted on the cylinder profiled barrel, and, on it, can be mounted either a threaded distributor or a base on which can be mounted an ISO distributor. Once installed the connections must be done with fittings and pipes. All of the threaded holes on the support plate are dedicated to different valves series as per attached drawing.

Bases for ISO solenoid valves

Coding: 1320.N

| | |
|---|-----------|
| N | STANDARDS |
| | 21 = ISO1 |
| | 22 = ISO2 |



| Dimensions | | | | |
|---------------------------|----|----|----|--------|
| Bases for solenoid valves | A | B | C | D |
| ISO 1 | 40 | 75 | 15 | G 1/8" |
| ISO 2 | 50 | 95 | 20 | G 1/4" |



Profile tube cylinders, non rotating

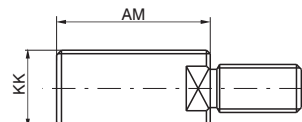
Series 1325-1326-1345-1347 - Twin rod cylinders - Accessories

All of the attachments of the ISO 15552 can be mounted, with the exclusion of the front flange and the foot mounting bracket that, although they are part of the same series, need a small adjustment in the exit zone of the rods. For these there is a different code and the dimensions are indicated below.

Threaded Nipple

Coding: 1325.Ø.17F

| Ø | BORE |
|-----|------|
| 32 | Ø32 |
| 40 | Ø40 |
| 50 | Ø50 |
| 63 | Ø63 |
| 80 | Ø80 |
| 100 | Ø100 |

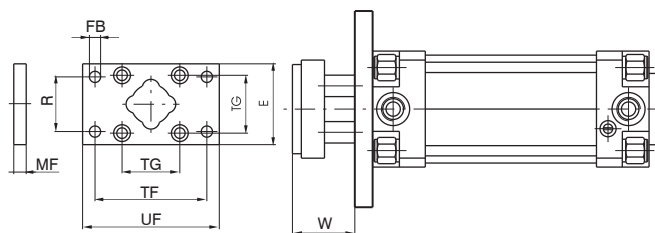


| Bore | 32 | 40 | 50 | 63 | 80 | 100 |
|------------|----------|----------|---------|---------|---------|---------|
| AM | 22 | 24 | 32 | 35 | 40 | 40 |
| KK | M10x1,25 | M12x1,25 | M16x1,5 | M16x1,5 | M20x1,5 | M20x1,5 |
| Weight (g) | 17 | 27 | 63 | 65 | 110 | 110 |

Front Flange

Coding: 1325.Ø.03F

| Ø | BORE |
|-----|------|
| 32 | Ø32 |
| 40 | Ø40 |
| 50 | Ø50 |
| 63 | Ø63 |
| 80 | Ø80 |
| 100 | Ø100 |



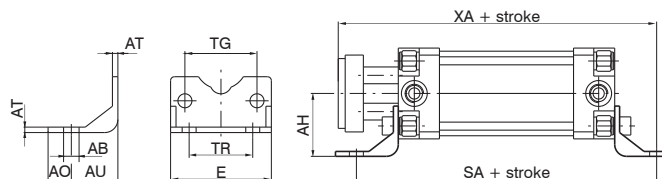
| Bore | 32 | 40 | 50 | 63 | 80 | 100 |
|------------|------|-----|------|------|------|------|
| E | 45 | 52 | 65 | 75 | 95 | 115 |
| FB (H13) | 7 | 9 | 9 | 9 | 12 | 14 |
| MF (JS 14) | 10 | 10 | 12 | 12 | 16 | 16 |
| R (JS 14) | 32 | 36 | 45 | 50 | 63 | 75 |
| TF (JS 14) | 64 | 72 | 90 | 100 | 126 | 150 |
| TG | 32,5 | 38 | 46,5 | 56,5 | 72 | 89 |
| UF | 80 | 90 | 110 | 120 | 150 | 170 |
| W | 16 | 20 | 25 | 25 | 30 | 35 |
| Weight (g) | 160 | 250 | 480 | 620 | 1430 | 3500 |

Front foot mounting bracket (short)

Coding: 1325.Ø.05/1F

| Ø | BORE |
|-----|------|
| 32 | Ø32 |
| 40 | Ø40 |
| 50 | Ø50 |
| 63 | Ø63 |
| 80 | Ø80 |
| 100 | Ø100 |

(1 piece)



| Bore | 32 | 40 | 50 | 63 | 80 | 100 |
|------------|------|-----|------|------|-----|-----|
| AB (H14) | 7 | 9 | 9 | 9 | 12 | 14 |
| AH (JS 15) | 32 | 36 | 45 | 50 | 63 | 71 |
| AO (± 0,2) | 11 | 8 | 13 | 13 | 14 | 15 |
| AT | 3,5 | 3,5 | 3,5 | 4,5 | 5 | 5 |
| AU | 24 | 28 | 32 | 32 | 41 | 41 |
| E | 45 | 52 | 65 | 75 | 95 | 115 |
| SA | 142 | 161 | 170 | 185 | 210 | 220 |
| TG | 32,5 | 38 | 46,5 | 56,5 | 72 | 89 |
| TR (JS 14) | 32 | 36 | 45 | 50 | 63 | 75 |
| XA | 144 | 163 | 175 | 190 | 215 | 230 |
| Weight (g) | 50 | 70 | 120 | 180 | 320 | 400 |